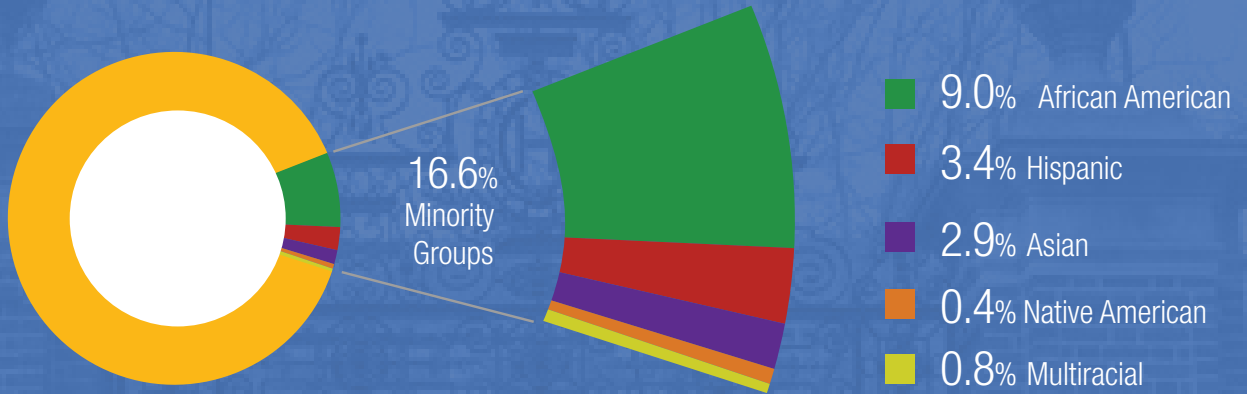


NLN FACULTY CENSUS SURVEY HIGHLIGHTS

2018-2019

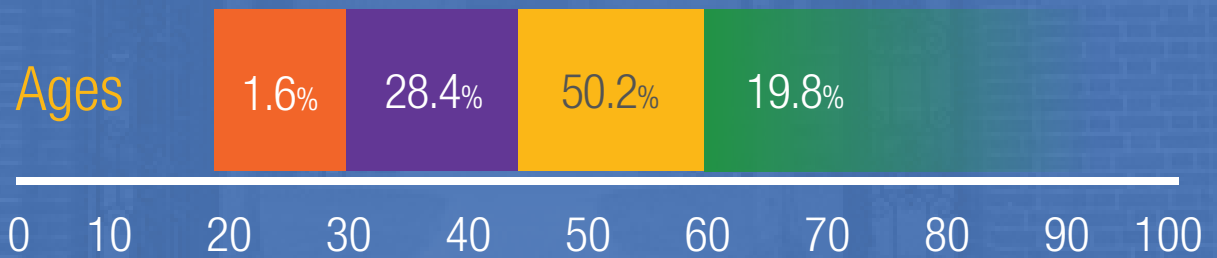
WHO ARE THE FULL-TIME NURSE EDUCATORS ?



93% Female



7% Male



69% Non-tenured 14% Tenure-track 17% Tenured

NLN FACULTY CENSUS SURVEY HIGHLIGHTS

2018-2019

VACANCIES AND SALARIES

669 faculty vacancies for nursing programs

82%
of schools plan to
hire new faculty



74%
of schools experience
difficulty in recruiting
and hiring

Reasons for hiring challenges

34% not enough
qualified faculty



37% not able to offer
competitive salaries



29% jobs are less
attractive, not in
budget, or other

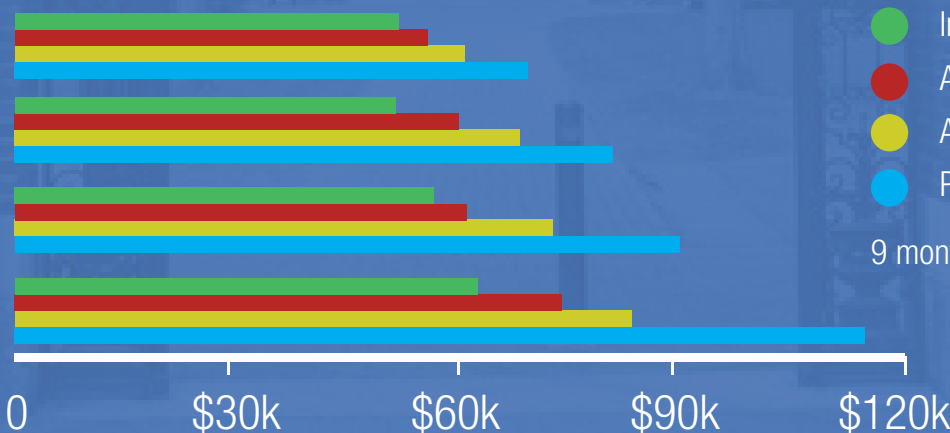


Associate's Colleges

Baccalaureate
Programs

Master's Colleges
and Universities

Doctoral/
Research Universities



- Instructor
 - Assistant Professor
 - Associate Professor
 - Professor
- 9 month appointment

The data presented in this report were provided by 43 percent of 1,018 NLN member schools invited to complete the survey (n = 435). Details are available online at <http://www.nln.org/newsroom/nursing-education-statistics>.